

michael miller FABRICS

NEW BEGINNINGS

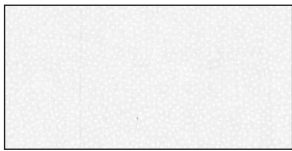
SIZE: 92" X 108" • LEVEL: INTERMEDIATE • PATTERN BY: SUSAN EMORY • FABRIC COLLECTION: BEGINNINGS



PLEASE NOTE: BEFORE BEGINNING YOUR PROJECT, CHECK FOR ANY PATTERN UPDATES AT MICHAELMILLERFABRICS.COM
212.704.0774 | info@michaelmillerfabrics.com | www.michaelmillerfabrics.com



NEW BEGINNINGS



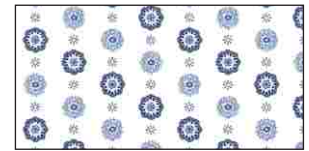
FABRIC A
CX1065 Snow
2-1/4 yards



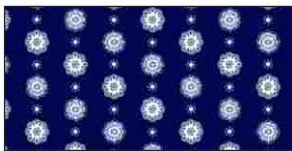
FABRIC B
CX8618 White
3/4 yard



FABRIC C
CX8622 Navy
3/4 yard



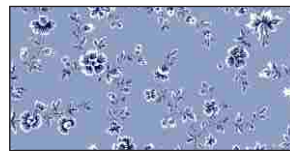
FABRIC D
CX8620 Light Blue
3/4 yard



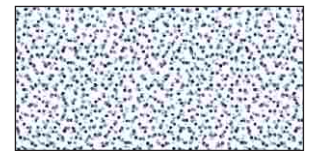
FABRIC E
CX8620 Navy
1/4 yard



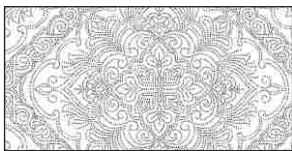
FABRIC F
CX8621 Navy
1/4 yard



FABRIC G
CX8622 Blue
2 yards



FABRIC H
CX8626 Light Blue
1/3 yard



FABRIC I
CX8623 White
1/3 yard



FABRIC J
CX8619 Navy
1 yard



FABRIC K
CX8618 Indigo
3-7/8 yards
(incl. binding)



FABRIC L
CX8623 Navy
8-1/2 yards
(backing)



NEW BEGINNINGS

WOF = Width of Fabric Selvage to Selvage

Cut Once Diagonally =

Cut Twice Diagonally =

KEY	CUTTING INSTRUCTIONS
A	<p>(2) 5-1/4" x WOF strips; subcut (14) 5-1/4" squares and cut twice diagonally (small triangles). (3) 5" x WOF strips, subcut (24) 5" squares (1) 4-7/8" x WOF strip; subcut (5) 4-7/8" squares and cut once diagonally (medium triangles). (10) 4-1/2" x WOF strips; from each of (4) strips, subcut (1) 4-1/2" x 20-1/2" rectangle and (1) 4-1/2" x 12-1/2" rectangle. From each of (2) strips, subcut (1) 4-1/2" x 20-1/2" rectangle and (2) 4-1/2" x 8-1/2" rectangles. From remaining strips, subcut (6) 4-1/2" x 8-1/2" rectangles and (14) 4-1/2" squares.</p>
B	<p>(1) 5-1/4" x WOF strip; subcut (6) 5-1/4" squares and cut twice diagonally (small triangles). (3) 5" x WOF strips, subcut (24) 5" squares (1) 4-7/8" x WOF strip; subcut (6) 4-7/8" squares and cut once diagonally (medium triangles).</p>
C	<p>(1) 5-1/4" x WOF strip; subcut (6) 5-1/4" squares and cut twice diagonally (small triangles). (3) 5" x WOF strips, subcut (24) 5" squares (1) 4-7/8" x WOF strip; subcut (6) 4-7/8" squares and cut once diagonally (medium triangles).</p>
D	<p>(1) 5-1/4" x WOF strip; subcut (6) 5-1/4" squares and cut twice diagonally (small triangles). (1) 4-3/4" x WOF strip; subcut (4) 4-3/4" squares. (5) 2-5/8" x WOF strips; from (1) strip, subcut (8) 2-5/8" squares. Set remaining strips aside for strip piecing.</p>
E	<p>(1) 5-1/4" x WOF strip; subcut (6) 5-1/4" squares and cut twice diagonally (small triangles).</p>
F	<p>(1) 5-1/4" x WOF strip; subcut (4) 5-1/4" squares and cut twice diagonally (small triangles). From remainder of strip, subcut (2) 4-1/2" squares.</p>
G	<p>(6) 6-7/8" x WOF strips; subcut (26) 6-7/8" squares and cut once diagonally (large triangles). From remainder, subcut (2) 5-1/4" squares and cut twice diagonally (small triangles). (4) 4-3/4" x WOF strips; from (2) strips, subcut (10) 4-3/4" squares and (4) 4-3/4" x 2-5/8" rectangles. Set remaining strips aside for strip piecing. (2) 2-5/8" x WOF strips; set aside for strip piecing.</p>

Cutting continued on page 4...



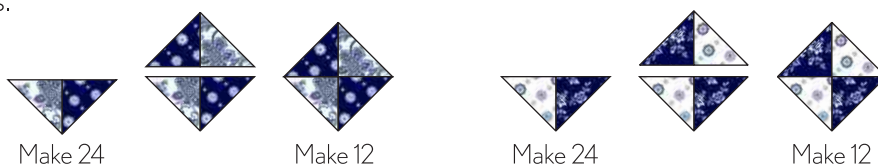
NEW BEGINNINGS

Cutting continued from page 2...

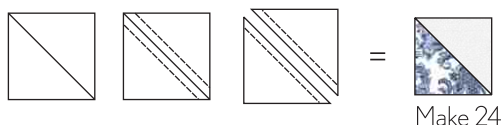
KEY	CUTTING INSTRUCTIONS
H	(2) 4-3/4" x WOF strips; set aside for strip piecing.
I	(2) 4-3/4" x WOF strips; set aside for strip piecing.
J	(7) 4-1/2" x WOF strips; set aside for inner border.
K	(6) 6-7/8" x WOF strips; subcut (30) 6-7/8" squares and cut once diagonally (large triangles). (5) 4-3/4" x WOF strips; from (3) strips, subcut (24) 4-3/4" squares. Set aside remaining strips for strip piecing. (6) 4-1/2" x WOF strips; set aside for outer borders. (4) 2-5/8" x WOF strips; From (2) strips, subcut (4) 2-5/8" x 9" rectangles and (8) 2-5/8" x 4-3/4" rectangles. Set aside remaining strips for strip piecing. (11) 2-1/2" x WOF strips; set aside for binding.

PIECING:

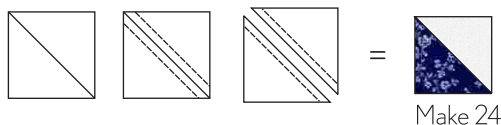
Sew a small Fabric B triangle to a small Fabric E triangle along the short side as shown. Press toward Fabric E. Repeat to make a total of (24) units. Sew (2) units together as shown. Press seam open. Repeat to make a total of (12) B/E star point units and (12) C/D star point units.



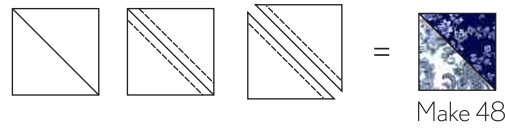
Draw a diagonal line on the wrong side of (4) 5" Fabric A squares. With right sides together, place a marked 5" Fabric A square on top of a 5" Fabric B square. Stitch 1/4" on each side of drawn line. Cut along drawn line and press toward Fabric B. Trim half-square triangle unit to 4-1/2" square. Repeat to make a total of (24).



Repeat steps above to make (24) Fabric A/C half-square triangle units.



Draw a diagonal line on the wrong side of (24) 5" Fabric B squares. With right sides together, place a marked 5" Fabric B square on top of a 5" Fabric C square. Stitch 1/4" on each side of drawn line. Cut along drawn line and press toward Fabric C. Trim half-square triangle unit to 4-1/2" square. Repeat to make a total of (48) Fabric B/C half-square triangle units.



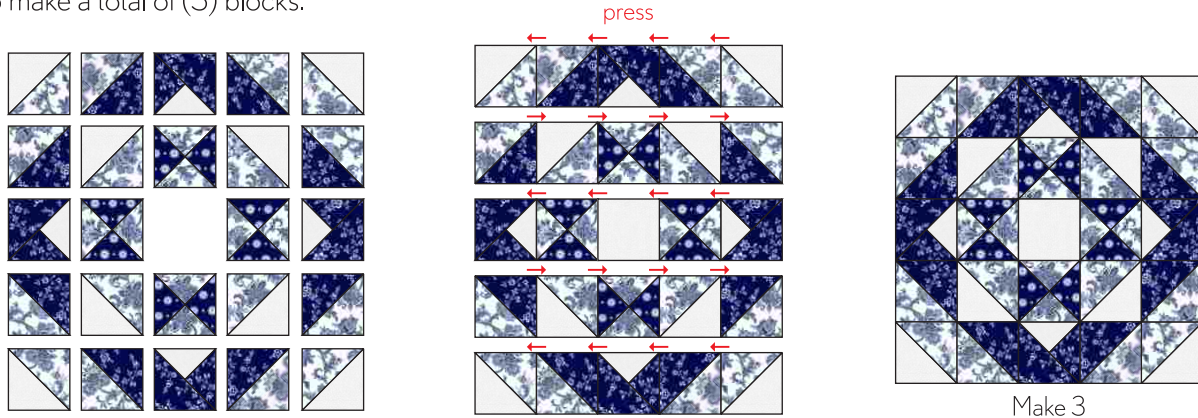
Sew a small Fabric A triangle to a small Fabric B triangle along the short side as shown. Press toward Fabric B. Sew a medium Fabric B triangle on the long edge and press toward Fabric B. Trim quarter-square triangle unit to 4-1/2" square. Repeat to make a total of (12) Fabric A/B quarter-square triangle units.



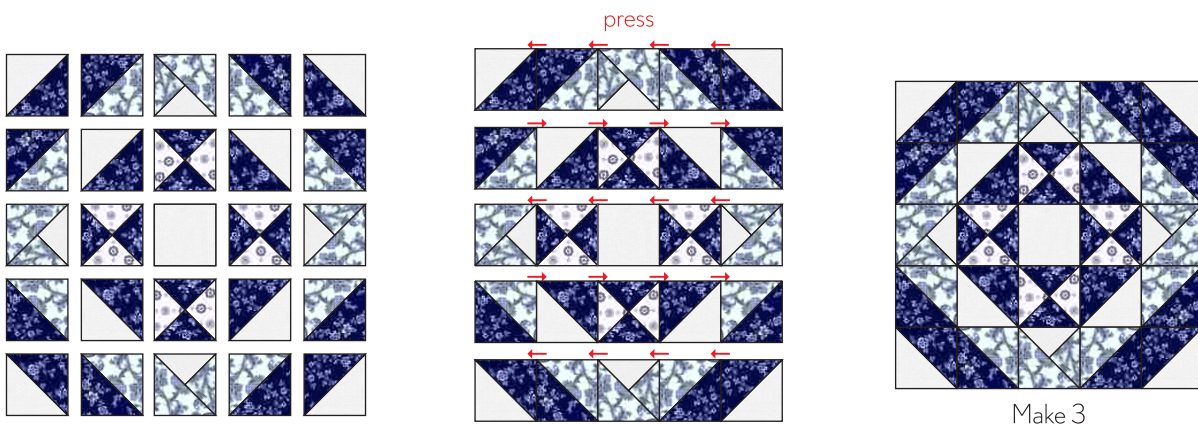
Sew a small Fabric A triangle to a small Fabric C triangle along the short side as shown. Press toward Fabric C. Sew a medium Fabric C triangle on the long edge and press toward Fabric C. Trim quarter-square triangle unit to 4-1/2" square. Repeat to make a total of (12) Fabric A/C quarter-square triangle units.



Lay out (4) Fabric B/C star point units; (8) Fabric A/B half-square triangle units; (8) Fabric B/C half-square triangle units; (4) Fabric A/B quarter-square triangle units and (1) 4-1/2" Fabric A square, as shown below. Sew together into horizontal rows and press as indicated by arrows. Sew rows together and press seams open to complete block. Block should measure 20-1/2". Repeat to make a total of (3) blocks.



Repeat with remaining units to make (3) of the block shown below. Set all blocks aside.



Sew a Fabric F small triangle to a small Fabric A triangle along the short side as shown. Press toward Fabric F. Repeat to make a total of [8] units.



Sew a Fabric F small triangle to a small Fabric G triangle along the short side as shown. Press toward Fabric F. Repeat to make a total of [8] units.



Sew a Fabric F/A unit to a Fabric F/G unit as shown. Press seam open. Trim unit to measure 4-1/2" square. Repeat to make a total of [8] star point units.



Sew a Fabric C small triangle to a small Fabric A triangle along the short side as shown. Press toward Fabric C. Repeat to make a total of [7] units.



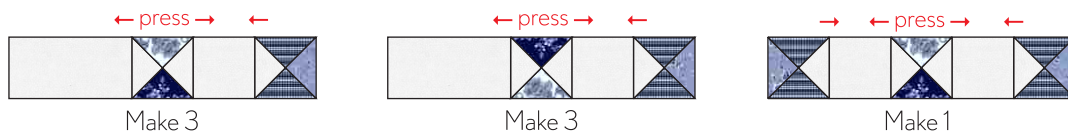
Sew a Fabric B small triangle to a small Fabric A triangle along the short side as shown. Press toward Fabric B. Repeat to make a total of [7] units.



Sew a Fabric C/A unit to a Fabric B/A unit as shown. Press seam open. Trim unit to measure 4-1/2" square. Repeat to make a total of [7] sashing triangle units.



Arrange 8-1/2" x 4-1/2" Fabric A rectangles, 4-1/2" Fabric A squares, star point units and sashing triangle units as shown in diagrams below. Sew together and press toward Fabric A rectangles and squares to complete sashing units. Set aside.



Sew a Fabric B small triangle to a small Fabric A triangle along the short side as shown. Press toward Fabric B. Repeat to make a total of [5] units.



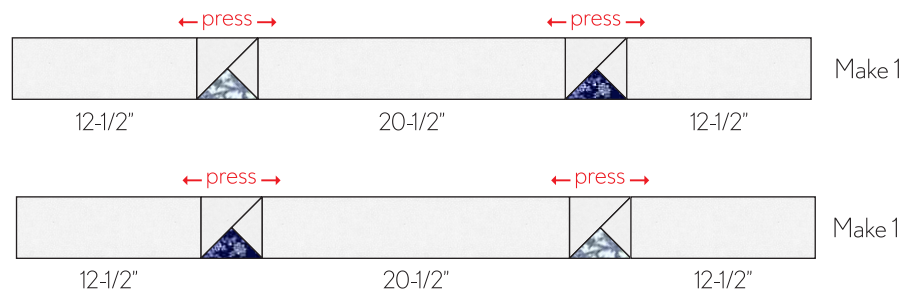
Sew a Fabric C small triangle to a small Fabric A triangle along the short side as shown. Press toward Fabric C. Repeat to make a total of [5] units.



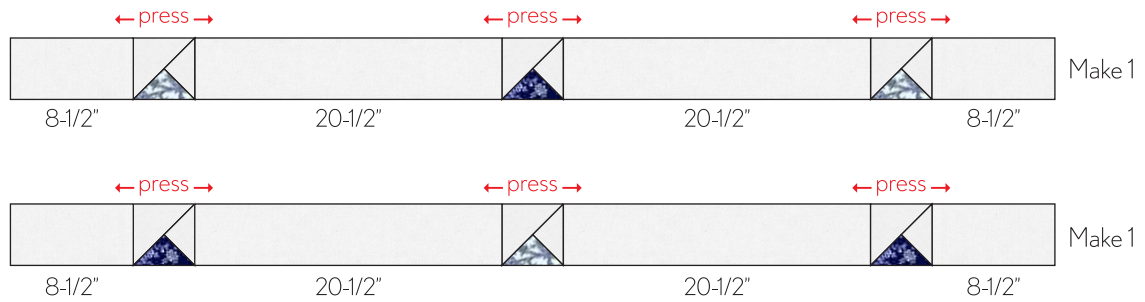
Sew a Fabric A medium triangle to each unit on the long side as shown. Press toward Fabric A. Trim unit to measure 4-1/2" square. Make [5] of each.



Arrange [2] triangle units, [2] 12-1/2" x 4-1/2" Fabric A rectangles, [1] 20-1/2" x 4-1/2" Fabric A rectangle as shown below. Sew together and press toward Fabric A rectangles. Make [1]. Repeat, moving triangle unit positions in the second inner border unit. Set aside.



Arrange [3] triangle units, [2] 8-1/2" x 4-1/2" Fabric A rectangles, [2] 20-1/2" x 4-1/2" Fabric A rectangles as shown below. Sew together and press toward Fabric A rectangles. Make [1]. Repeat, moving triangle unit positions in the second inner border unit. Set aside.

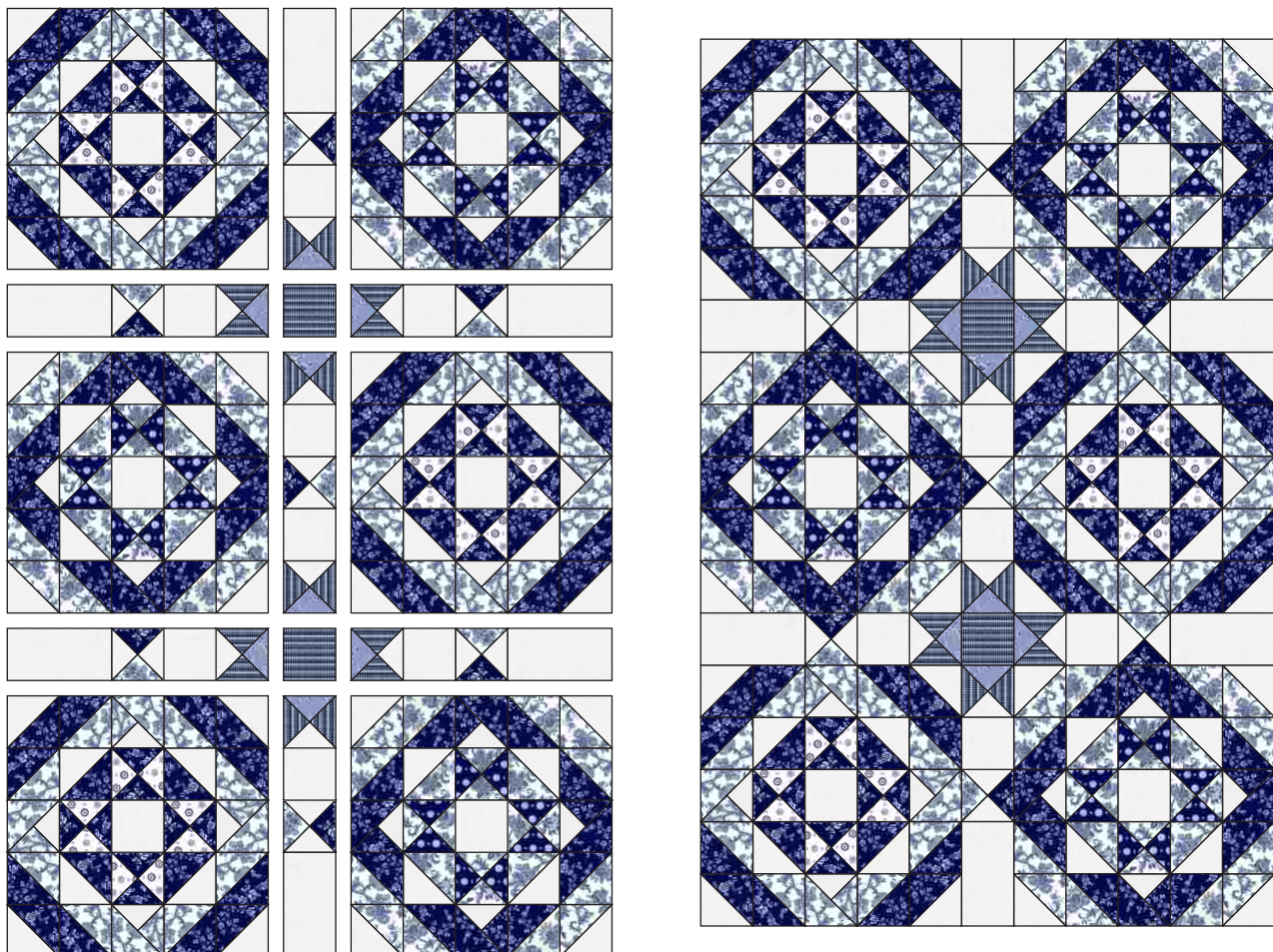


Trim selvage edges from [7] 4-1/2" Fabric J strips. Sew strips together, end-to-end, and press seams in either direction. Cut [2] strips 4-1/2" x 76-1/2" and [2] strips 4-1/2" x 60-1/2". Set aside.

Quilt Center Assembly:

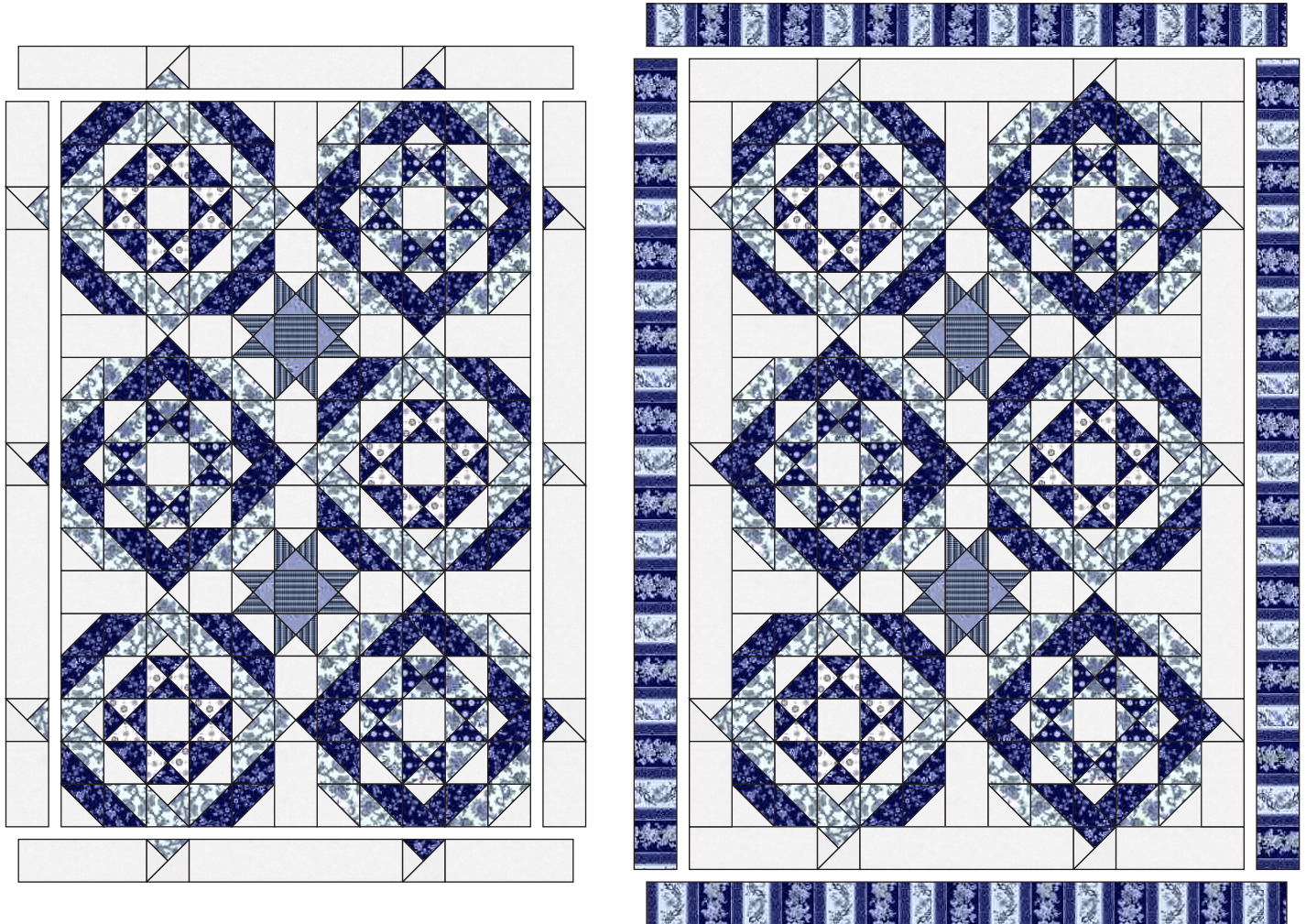
Arrange blocks, sashing units and 4-1/2" Fabric F squares as shown at right. Be careful to place sashing triangle units in correct position, matching Fabrics B and C with the blocks.

Sew blocks and sashing units together into horizontal rows. Press toward sashing units. Sew rows together and press toward sashing rows.



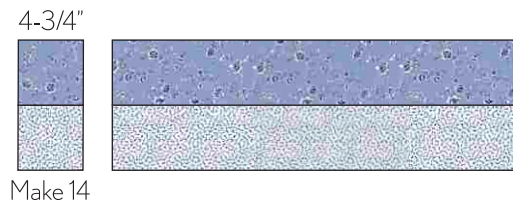
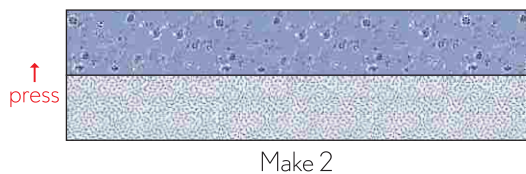
Sew a long inner border to each side of the quilt center. Again, take care to match triangle units to blocks. Press toward inner border. Sew remaining inner borders to top and bottom of quilt and press toward inner borders.

Sew a 4-1/2" x 76-1/2" Fabric J border strip to each side of quilt center. Press toward border strips. Sew a 4-1/2" x 60-1/2" Fabric J border strip to top and bottom of unit and press toward border strips to complete quilt center. Sew aside.



Assemble Border Blocks:

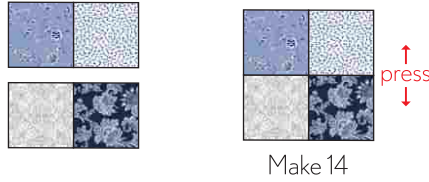
Sew a 4-3/4" Fabric G strip to a 4-3/4" Fabric H strip lengthwise as shown. Press toward Fabric G. Repeat to make a total of [2] strip sets. Crosscut [14] 4-3/4" x 9" segments.



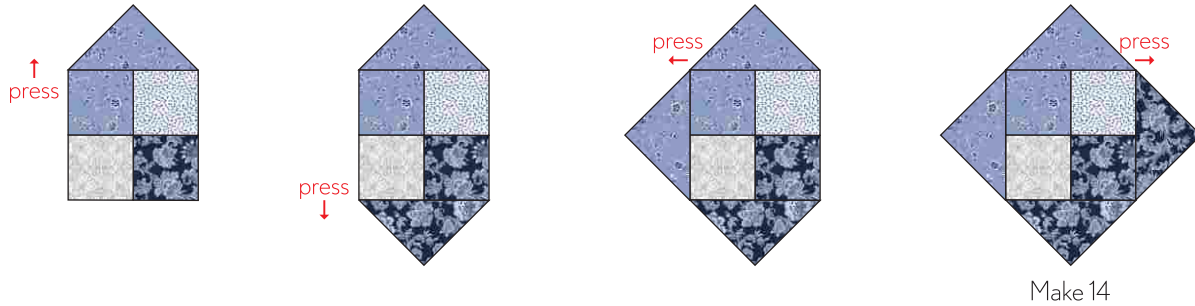
Repeat steps above with 4-3/4" Fabric K and Fabric I strips to make a total of [14] 4-3/4" x 9" segments.



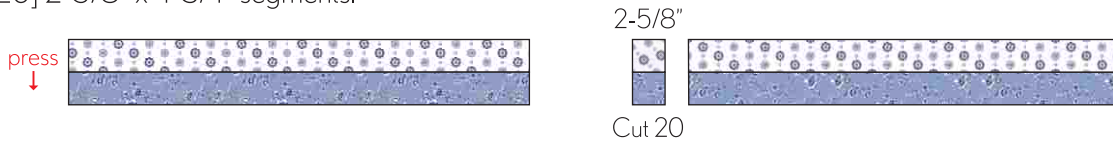
Sew a Fabric G/H segment to a Fabric K/I segment to create a four patch. Press seam open. Repeat to make a total of [14] four-patches.



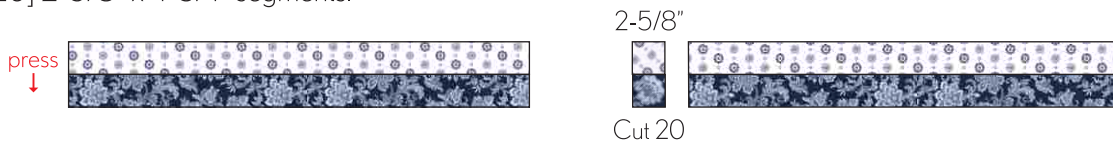
Sew a Fabric G large triangle to top of block. Press toward triangle. Sew a Fabric K large triangle to bottom of block and press toward triangle. Sew a Fabric G large triangle to left side of block and press toward Fabric G. Sew a Fabric K large triangle to right side of block and press toward triangle. Block should measure 12-1/2" square. Repeat to make a total of [14] four-patch blocks.



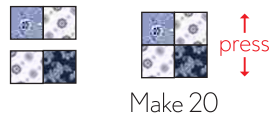
Sew a 2-5/8" wide Fabric D strip to a 2-5/8" Fabric G strip lengthwise as shown. Press toward Fabric G. Make [2]. Crosscut [20] 2-5/8" x 4-3/4" segments.



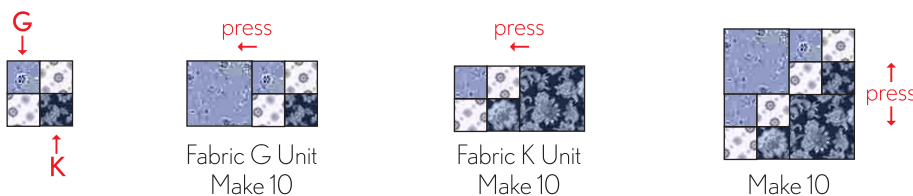
Sew a 2-5/8" wide Fabric D strip to a 2-5/8" Fabric K strip lengthwise as shown. Press toward Fabric K. Make [2]. Crosscut [20] 2-5/8" x 4-3/4" segments.



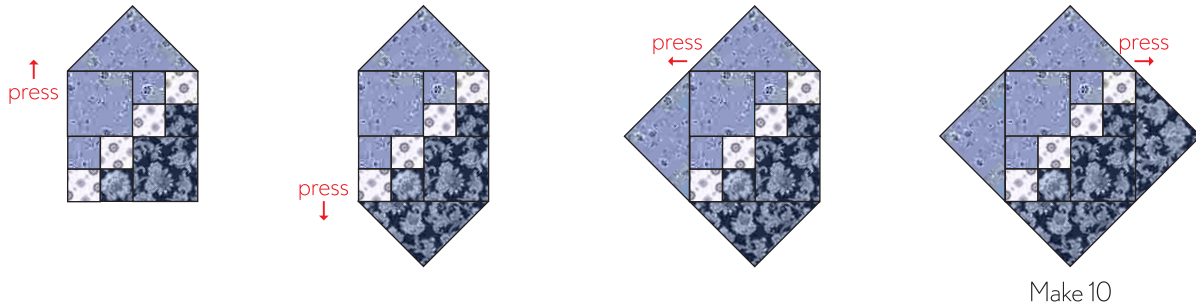
Sew a D/G segment to a D/K segment. Press seam open. Repeat to make a total of [20] four-patch blocks.



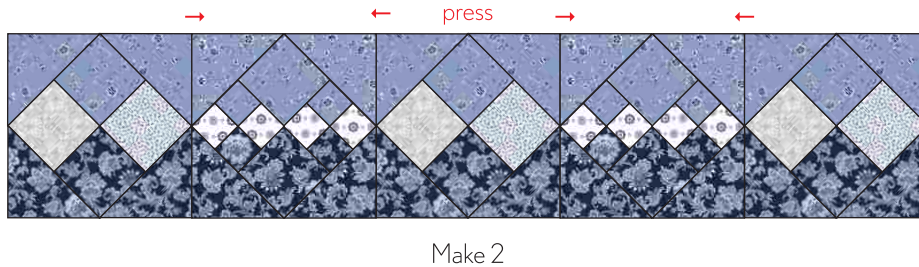
Place all four-patches with Fabric G on the top left and Fabric K on the bottom right. Sew a 4-3/4" Fabric G square on the left side of a four-patch block. Press toward Fabric G. Repeat to make a total of [10] Fabric G units. Sew a 4-3/4" Fabric K square on the right side of block. Press toward Fabric K. Repeat to make a total of [10] Fabric K units. Sew Fabric G and Fabric K units together, as shown, and press seam open. Repeat to make a total of [10] blocks. Blocks should measure 9" square.



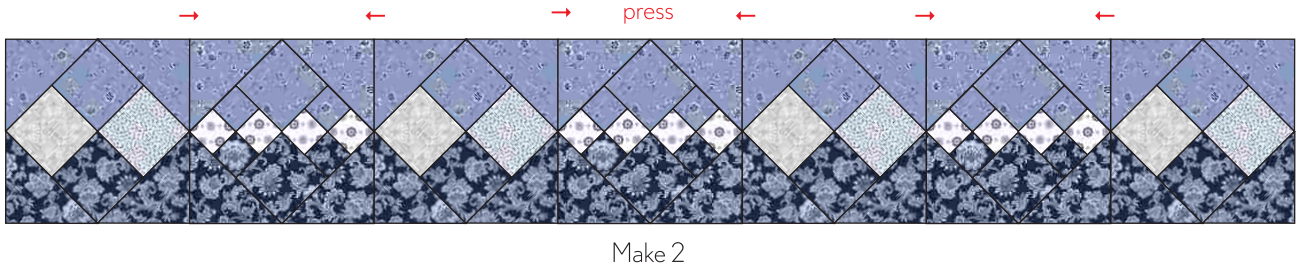
Sew a Fabric G large triangle to top of block. Press toward triangle. Sew a Fabric K large triangle to bottom of block and press toward triangle. Sew a Fabric G large triangle to left side of block and press toward Fabric G. Sew a Fabric K large triangle to right side of block and press toward triangle. Block should measure 12-1/2" square. Repeat to make a total of [10] double four-patch blocks.



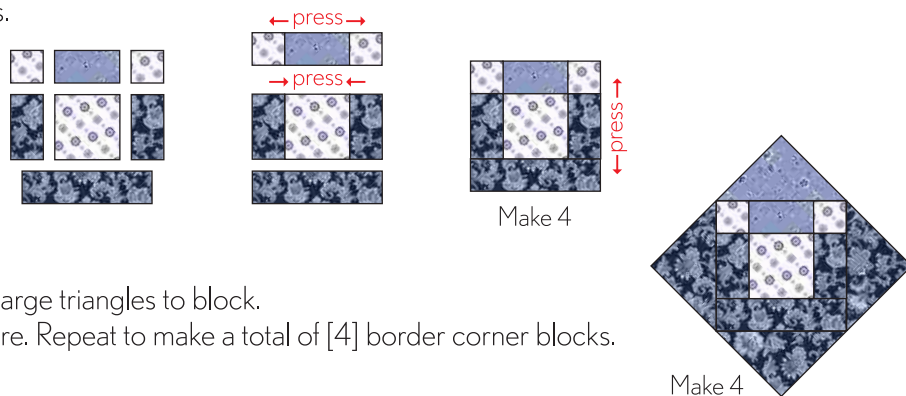
Arrange [3] four-patch blocks and [2] double four-patch blocks as shown below. Sew together and press toward double four-patch blocks. Repeat to make a total of [2] top/bottom borders. Set aside.



Arrange [4] four-patch blocks and [3] double four-patch blocks as shown below. Sew together and press toward double four-patch blocks. Repeat to make a total of [2] side borders. Set aside.

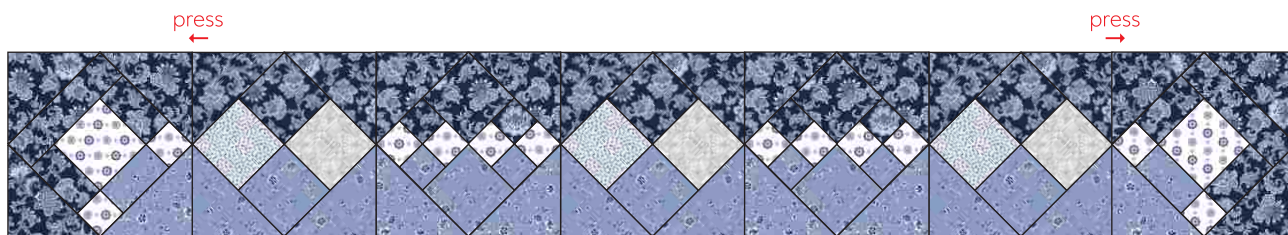


Arrange [2] 2-5/8" Fabric D squares; [1] 2-5/8" x 4-3/4" Fabric G rectangle; [2] 2-5/8" x 4-3/4" Fabric K rectangles; [1] 4-3/4" Fabric D square and [1] 2-5/8" x 9" Fabric K rectangle, as shown below. Sew units together into horizontal rows and press seam as indicated by arrows. Sew rows together and press to complete block. Block should measure 9" square. Repeat to make a total of [4] blocks.



Use method at top of page to add large triangles to block. Block should measure 12-1/2" square. Repeat to make a total of [4] border corner blocks.

Referring to diagram below for placement, sew a border corner block to each end of a top/bottom border. Press toward border corner block. Repeat to make a total of [2] top/bottom borders.

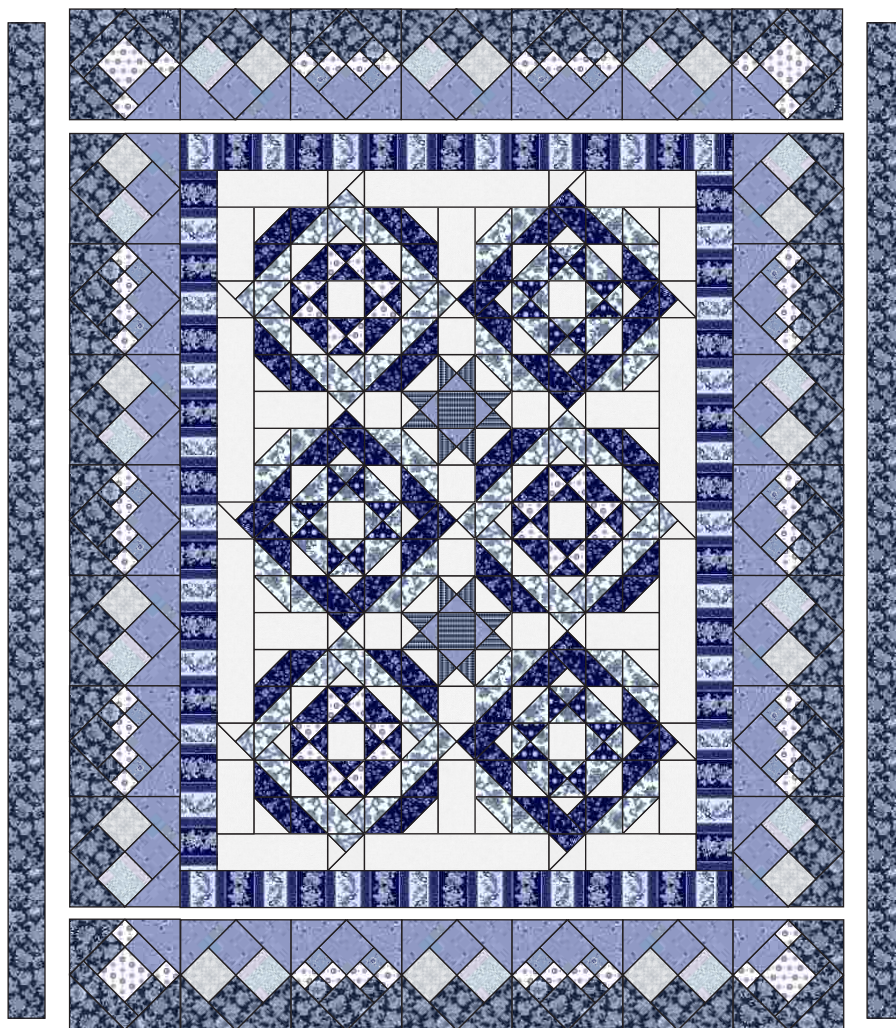


Make 2

Sew a side border to each side of quilt center as shown below. Press toward quilt center. Sew a top/bottom border to the top and bottom of quilt center and press toward quilt center.

Trim selvage edges from [6] 4-1/2" Fabric K strips. Sew [3] strips together, end-to-end, and press seams in either direction. Trim strip to 4-1/2" x 108-1/2" and sew to left side of quilt center. Press toward strip. Repeat on opposite side of quilt center.

Quilt top should measure 92-1/2" 108-1/2".



Layer quilt top, batting and backing together to form quilt sandwich. Baste and quilt as desired. Bind using [11] 2-1/2" Fabric K strips.



www.michaelmillerfabrics.com

NEW BEGINNINGS



FABRIC A
SC5333 Cream
2-1/4 yards



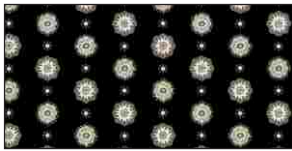
FABRIC B
CX8618 Cream
2/3 yard



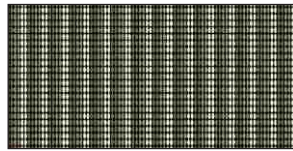
FABRIC C
CX8622 Black
2/3 yard



FABRIC D
CX8620 Cream
2/3 yard



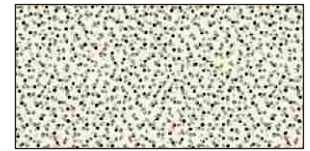
FABRIC E
CX8620 Black
1/4 yard



FABRIC F
CX8621 Black
1/4 yard



FABRIC G
CX8622 Taupe
2 yards



FABRIC H
CX8626 Cream
1/3 yard



FABRIC I
CX8623 Cream
1/3 yard



FABRIC J
CX8619 Black
1 yard



FABRIC K
CX8618 Black
3-7/8 yards
(incl. binding)



FABRIC L
CX8623 Black
8-1/2 yards
(backing)