

BERNAT® CROCHET C2C NORDIC MOTIF BLANKET



CROCHET | SKILL LEVEL: INTERMEDIATE

ABBREVIATIONS

Approx = Approximately

Beg = Beginning

Ch = Chain(s)

Cont = Continue

Dc = Double crochet

Dec = Decrease

Rem = Remain(ing)

Rep = Repeat

RS = Right side

Sl st(s) = Slip stitch(es)

Sp(s) = Space(s)

St(s) = Stitch(es)

Tog = Together

WS = Wrong side

Yoh = Yarn over hook

MEASUREMENTS

Approx 48" x 58" [122 x 147.5 cm] excluding fringe.

GAUGE

8 dc and 4.5 rows = 4" [10 cm].

INSTRUCTIONS

Note: Afghan is worked diagonally from corner to corner. When working from chart, wind small balls of the colors to be used, one for each separate area of color in the design. Start new colors at appropriate points. To change color, work to last 2 loops on hook, yoh with new color.

Pull through 2 loops on hook to complete st and proceed in new color.

With MC, ch 6. See Chart – each square of chart represents 1 block.

1st row: (RS). 1 dc in 4th ch from hook (counts as 2 dc). 1 dc in each of last 2 ch. Turn. 1 block made.

2nd row: Ch 6. 1 dc in 4th ch from hook. 1 dc in each of next 2 ch – beg block made. (Sl st. Ch 3. 3 dc) in next ch-3 sp – block made. Turn. 2 blocks.

3rd row: Beg block. *Block in next ch-3 sp. Rep from * to end of row. Turn. 3 blocks.



MATERIALS

Bernat® Softee® Chunky™ Tweeds™ (10.5 oz/300 g; 316 yds/289 m)

Main Color (MC) Midnight White **4 balls** or 1264 yds/1156 m (11001)

Contrast A Blue Tweed (11008) **1 ball** or 207 yds/189 m

Contrast B Burgundy Tweed (11007) **1 ball** or 228 yds/208 m

Size U.S. L/11 (8 mm) crochet hook **or size needed to obtain gauge.**

BERNAT® CROCHET C2C NORDIC MOTIF BLANKET

Keeping cont of color changes in Chart (each square on grid represents 1 block), rep last row until 37th row of chart is complete. 37 blocks.

Keeping cont of Chart, proceed as follows to work sides even:

38th row: Beg block. *Block in next ch-3 sp. Rep from * to last ch-3 sp. Sl st in last ch-3 sp. **(Do not** make a block.) Turn.

39th row: Sl st in each of first 3 dc. *Block in next ch-3 sp. Rep from * to end of row. Turn.

40th to 43rd rows: Rep last 2 rows twice more.

Keeping cont of Chart, proceed as follows to dec corner:

44th row: Sl st in each of first 3 dc. *Block in next ch-3 sp. Rep from * to last ch-3 sp. Sl st in last ch-3 sp. **(Do not** make a block.) Turn.

Keeping cont of Chart, rep last row until 1 block rem. Fasten off.

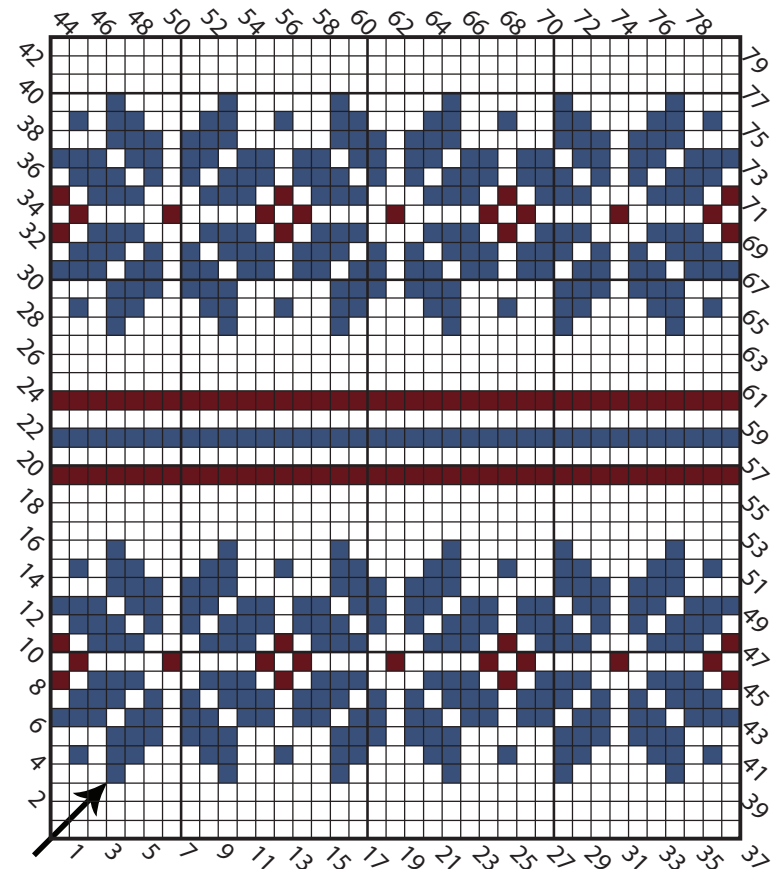
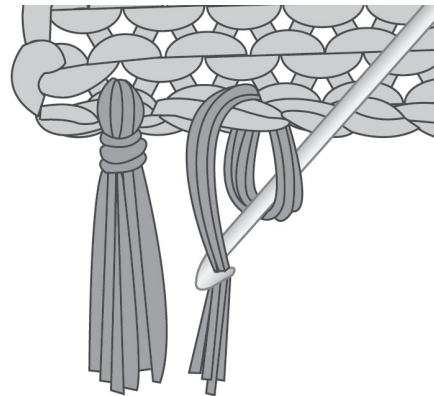
Bottom Edging: With WS facing, join B with sl st at bottom corner to work across bottom edge.

1st row: (WS). *Ch 3. Sl st between next 2 blocks. Rep from * to last block of edge. Ch 3. Sl st in corner. Turn.

2nd row: Ch 3 (counts as dc). *3 dc in next ch-3 sp. Rep from * to end of row. 1 dc in corner. Fasten off.

Top Edging: Rep for Bottom edging across top edge.

Fringe: Cut strands of MC 10" [25.5 cm] long. Taking 3 strands tog, fold in half and knot into fringe into every other st across Top and Bottom edges. Trim fringe evenly.



Blanket is worked diagonally - corner to corner

KEY

- = MC
- = Contrast A
- = Contrast B